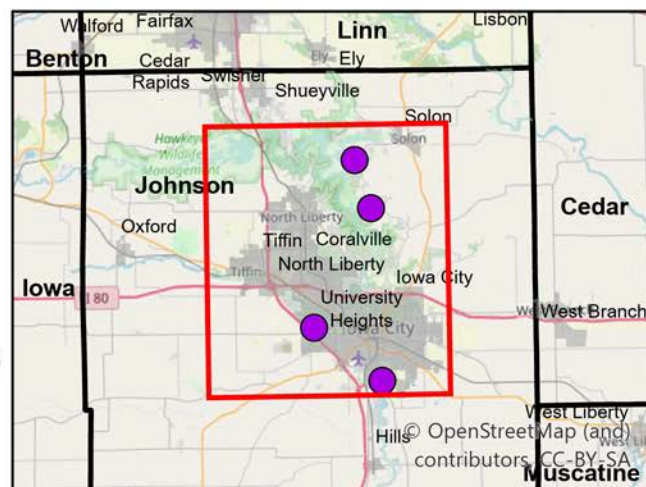
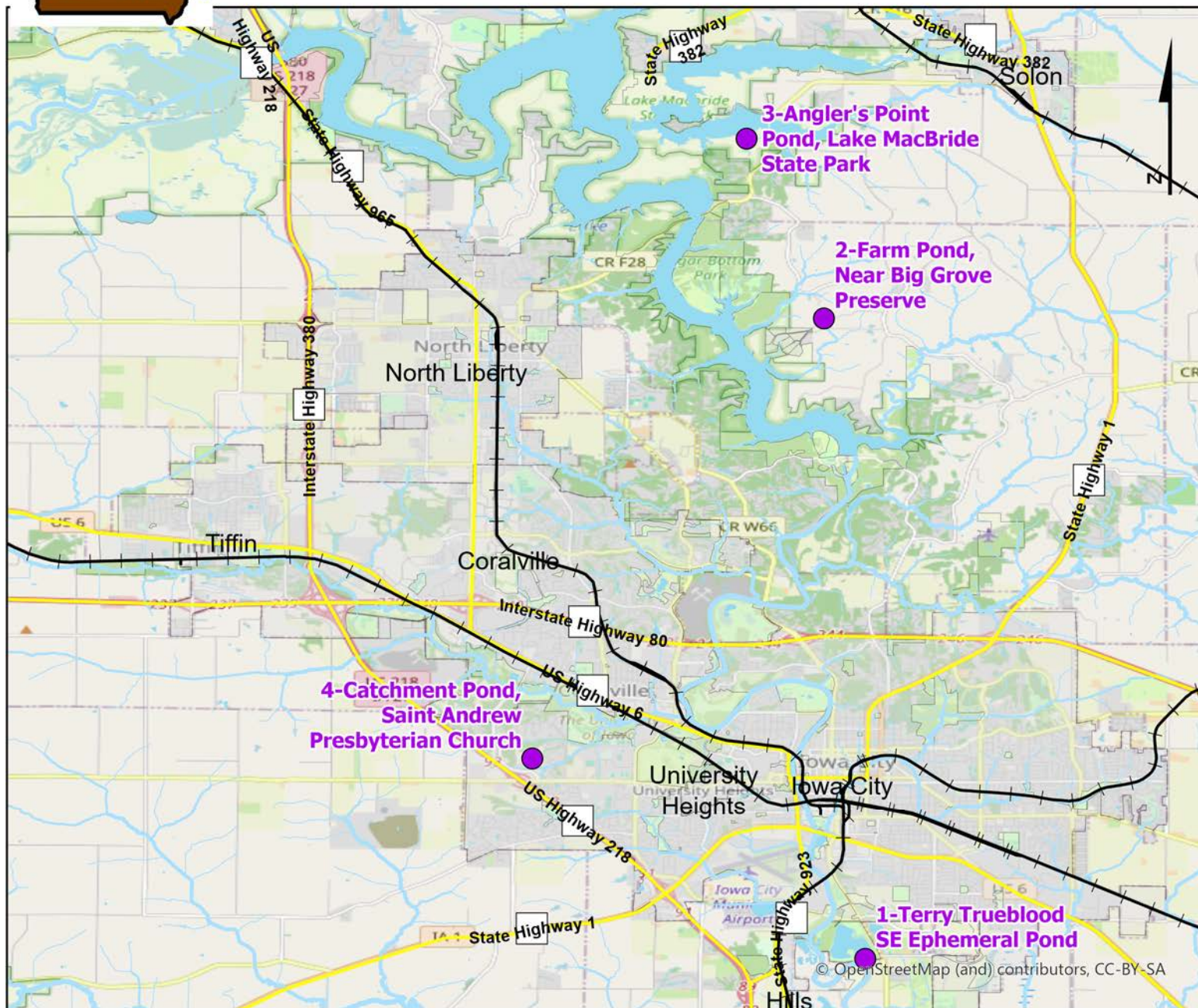


Volunteer Wildlife Monitoring Program (VWMP) Frog and Toad Survey

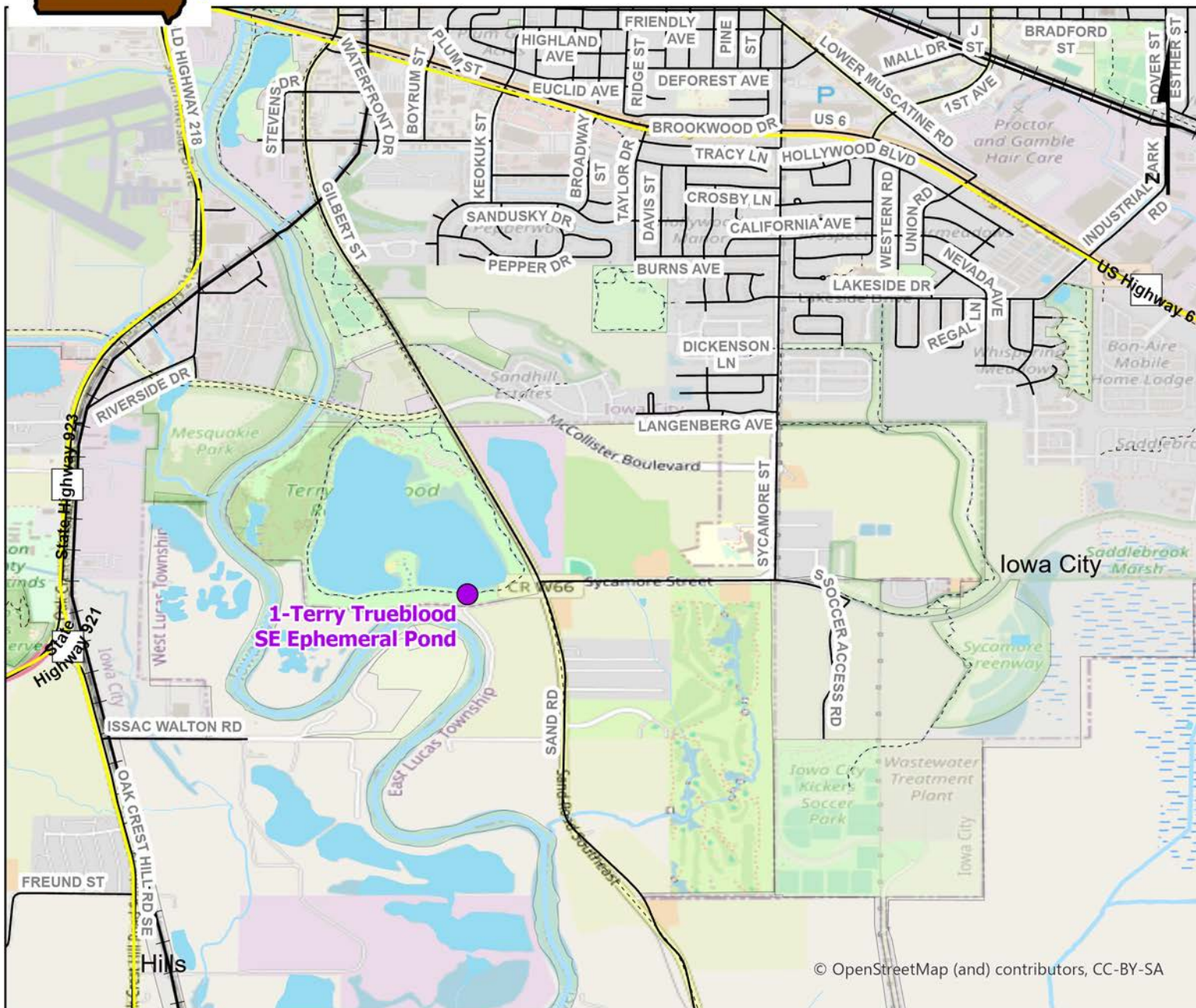
Route ID: 320 County: Johnson



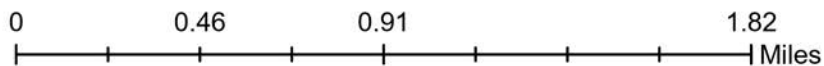
Legend
 ● Survey Stops

Volunteer Wildlife Monitoring Program (VWMP) Frog and Toad Survey

Route ID: 320 County: Johnson

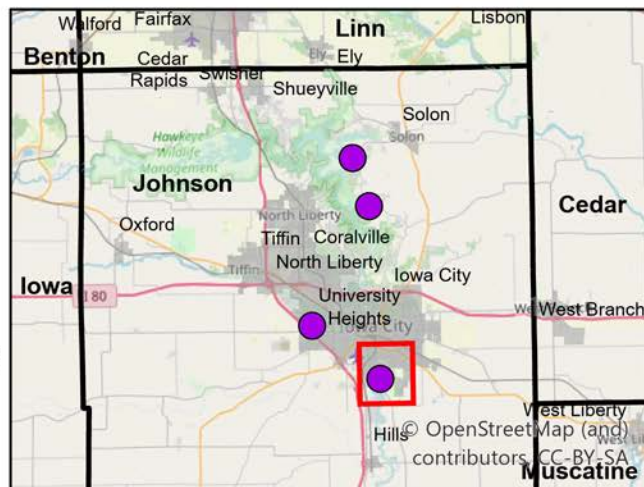


© OpenStreetMap (and) contributors, CC-BY-SA



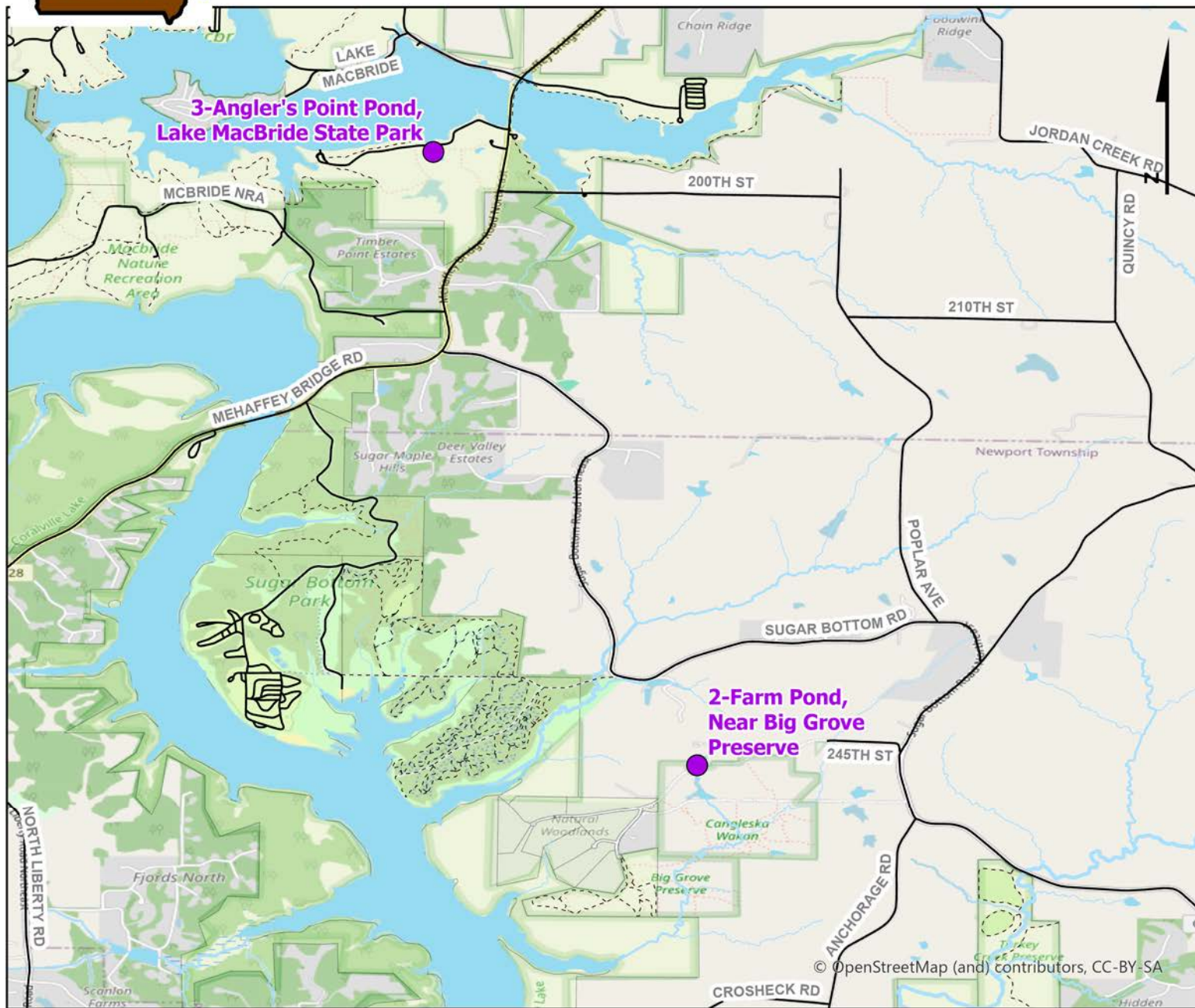
Legend

- Trails
- Survey Stops

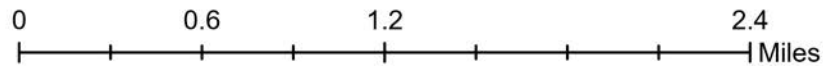


Volunteer Wildlife Monitoring Program (VWMP) Frog and Toad Survey

Route ID: 320 County: Johnson



© OpenStreetMap (and) contributors, CC-BY-SA



DNR
Volunteer Wildlife Monitoring Program

Legend

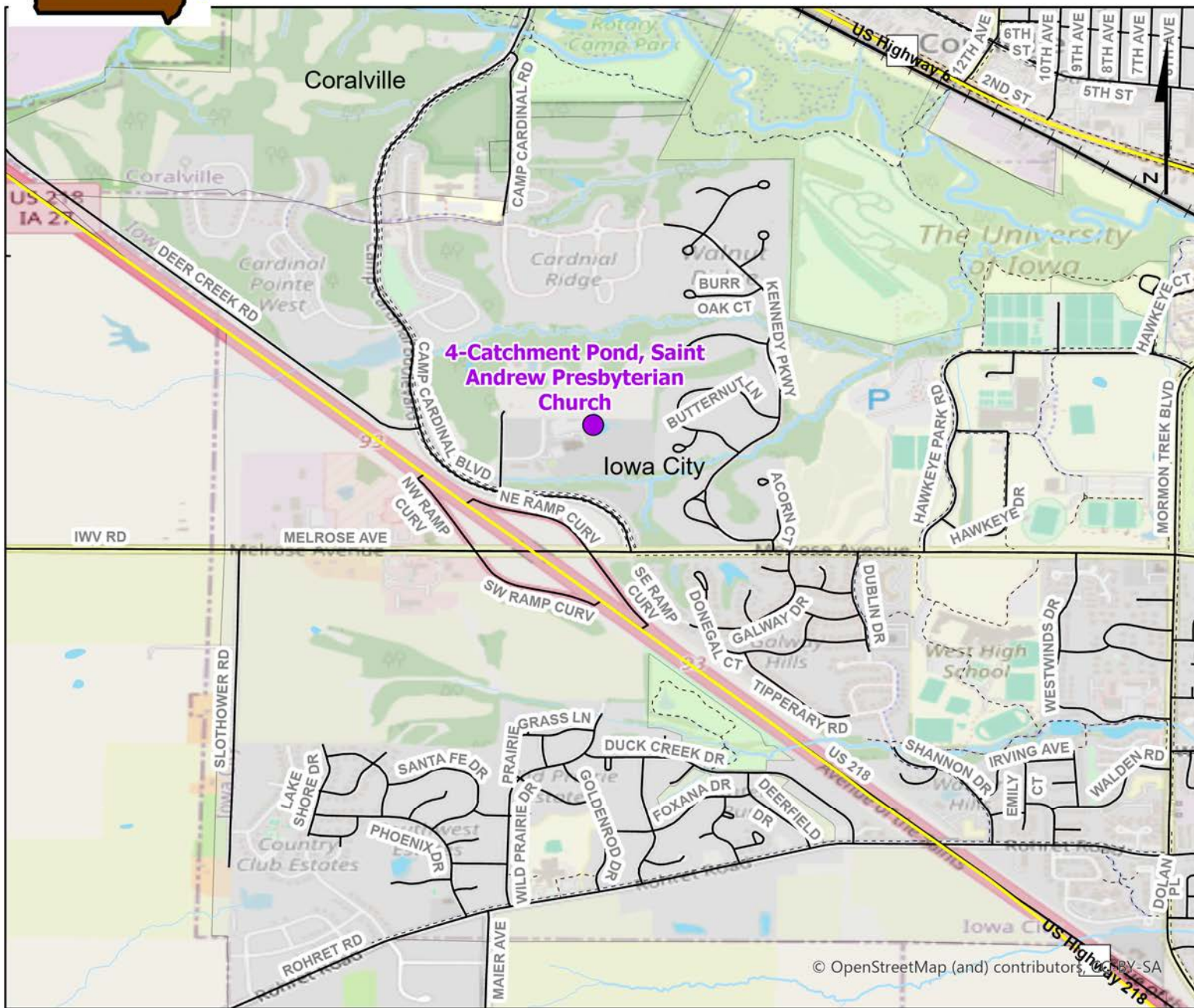
- Trails
- Survey Stops



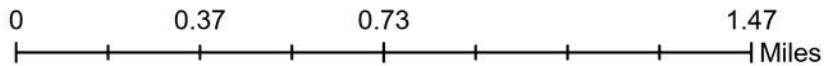
© OpenStreetMap (and) contributors, CC-BY-SA

Volunteer Wildlife Monitoring Program (VWMP) Frog and Toad Survey

Route ID: 320 County: Johnson

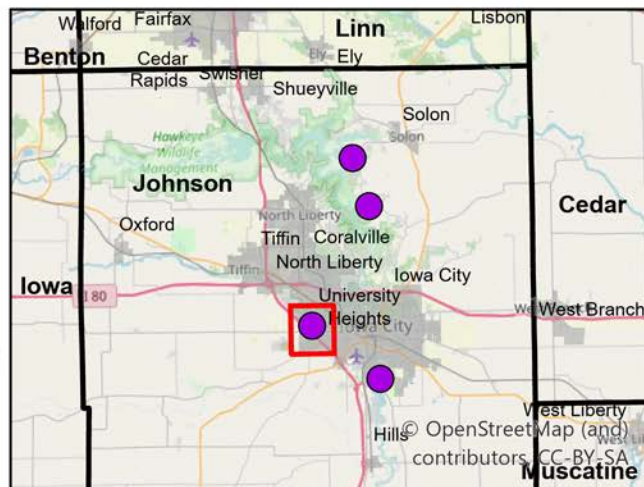


© OpenStreetMap (and) contributors, CC-BY-SA



Legend

- Trails
- Survey Stops





Frog and Toad Call Survey Route Description

Route ID **320**

Established: **2023**

Site Number	Name	County	Latitude	Longitude	Directions
1	Terry Trueblood SE Ephemeral Pond	Johnson	41.619817	-91.526068	Small ephemeral pond located on the SE side of the lake, approximately 250 yards SW of the Sand Road parking access along the paved walking trail. Ephemeral pond is adjacent to the walking trail; step to the south side of the trail to listen for amphibians.
2	Farm Pond, Near Big Grove Preserve	Johnson	41.753524	-91.534696	Rural pond near Big Grove Preserve, located on the north side of 245 Street NE, approximately 160 yards west of the main driveway to Cangleska Wakan. Park along side of road near western edge of the pond to listen for amphibians.
3	Angler's Point Pond, Lake MacBride State Park	Johnson	41.7910043	-91.5508323	Located adjacent to Angler's Point Road, on the south side of the road, approximately 525 yards west of Mehaffey Bridge Road NE and 75 yards east of a small parking lot. Use the small parking lot to turn around, and park along the south side of Angler's Point Road to listen for amphibians. On Angler's Point Rd. NE, just south of road. Parking lot is just past the pond.
4	Catchment Pond, Saint Andrew Presbyterian Church	Johnson	41.66177	-91.595563	Small catchment pond located east of Saint Andrew Presbyterian Church. Park along south edge of upper (east) parking lot to listen for amphibians.